



# TÜV SÜD Product Service Tire Test 2014 / 2015

TÜV Tire Test Mark– Nankang Sportnex AS-2+

225/45 R17 94W

Report No. 713051806

Test Period: September 2014 – May 2015

## TIRE DETAILS

### TEST TIRES (in testing order):

All candidate tires have been sent directly by the customer.

### Candidate tire:



**NANKANG**  
Sportnex AS-2+ + (candidate tire)  
225/45 R17 94W

### Competitor tires:

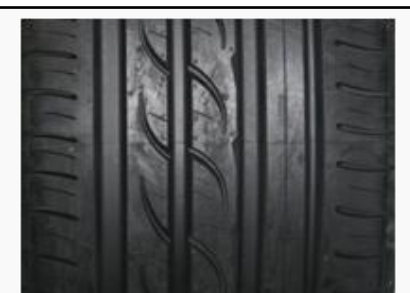
The competitor tires were purchased by TÜV SÜD PS from regular tire dealers.



**HANKOOK**  
VentusPrime2 K115  
225/45 R17 94W



**KLEBER**  
Dynaxer HP3 UHP  
225/45 R17 94W



**YOKOHAMA**  
C-Drive 2  
225/45 R17 94W



## TEST DETAILS

### ■ Scope of Tests:

- Safety Wet: Aquaplaning (straight-line), Braking, Lateral wet grip, *Handling (additional test)*
- Safety Dry: Braking, Handling
- Robustness and Environmental: Rolling Noise, High Speed Advanced, Rolling Resistance

### ■ Test Location:

- ATP Papenburg (D), Wachauring (A), FAKTmotion (D), Garching (D)

### ■ Test Vehicles:

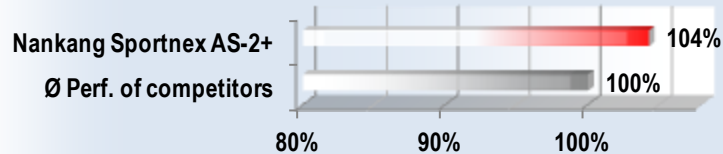
- VW Golf VII 1.6 TDI (105 hp) / VW Golf VII 2.0 TDI (150 hp), VW Passat

### ■ Acquisition and Evaluation of Results

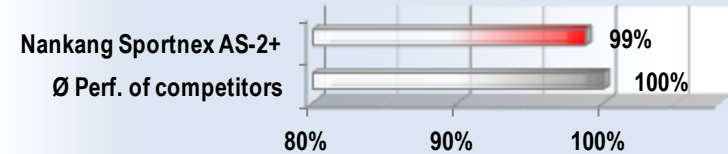
- The performance of each tire is assessed relative to the candidate tire (i.e. Specification A  $\cong$  100% in each test).
- The conversion of the results into a percentage value is done in a way that >100% always means better, <100% means worse.

## TEST RESULTS

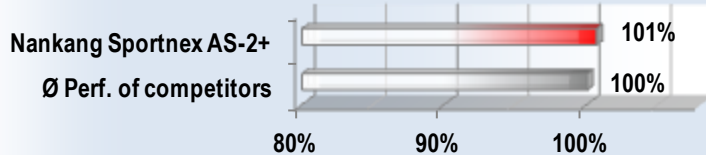
### AQUAPLANING PERFORMANCE (RELATIVE, Ø OF COMPETITORS = 100%)



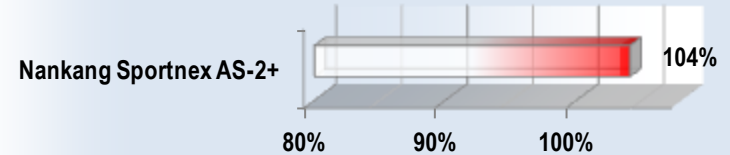
### DRY BRAKING PERFORMANCE (RELATIVE, Ø OF COMPETITORS = 100%)



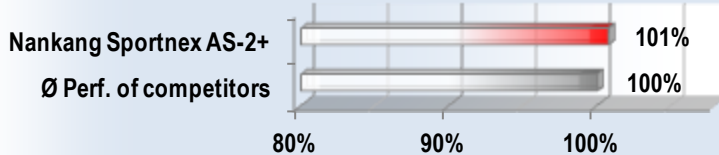
### WET BRAKING PERFORMANCE (RELATIVE, Ø OF COMPETITORS = 100%)



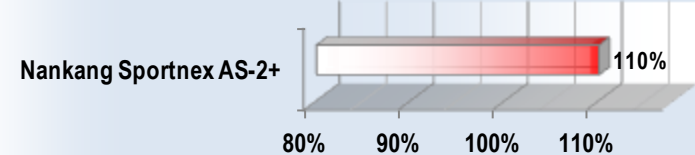
### HIGH SPEED DURABILITY (TÜV MARK INDEX)



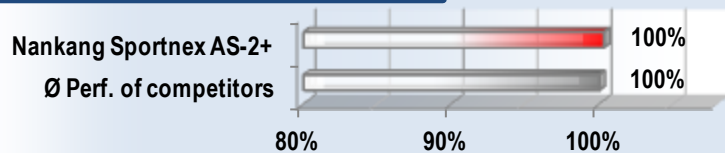
### LATERAL WET GRIP PERFORMANCE (RELATIVE, Ø OF COMPETITORS = 100%)



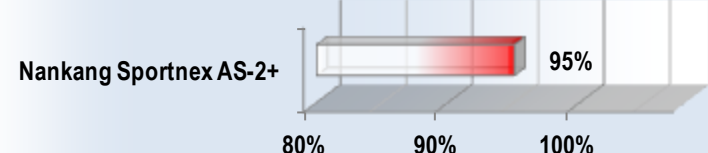
### TIRE ROLLING NOISE (TÜV MARK INDEX)



### DRY HANDLING: TOTAL PERFORMANCE (RELATIVE, Ø OF COMPETITORS = 100 [%])



### LOW ROLLING RESISTANCE (TÜV MARK INDEX)



Values are rounded to the nearest whole number.



## SUMMARY OF RESULTS OVERVIEW TÜV MARK

SUMMARY OF RESULTS (TÜV MARK QUALIFICATION TESTS)							
<b>CUSTOMER:</b>	Nankang	<b>TIRE SIZE:</b>	225/45 R17 94W	<b>ORDER / REPORT NO.:</b>	713051806		
<b>TEST PERIOD:</b>	October 2014 - April 2015	<b>TEST VEHICLE:</b>	VW Golf VII, VW Passat Variant	<b>TEST LOCATIONS:</b>	ATP (D), FAKTmotion (D), TÜV SÜD PS (E)		
	Weighting factor	Nankang Sportnex AS-2+	TÜV MARK REFERENCE COLLECTIVE	Nankang Sportnex AS-2+	Hankook VentusPrime2 K115	Kleber Dynaxer HP3 UHP	Yokohama C-Drive 2
AQUAPLANING STRAIGHTLINE	0,125	104,3%	100,0%	100,0%	95,3%	92,4%	100,1%
WET BRAKING	0,200	100,7%	100,0%	100,0%	101,8%	97,1%	99,1%
LATERAL WET GRIP	0,150	100,8%	100,0%	100,0%	96,7%	100,3%	100,8%
DRY BRAKING	0,125	98,7%	100,0%	100,0%	101,6%	101,7%	100,5%
DRY HANDLING	0,125	100,3%	100,0%	100,0%	99,8%	99,1%	100,2%
ROLLING NOISE	0,075	110,0%	TÜV-MARK INDEX	100,0%	100,0%	97,1%	100,0%
ROLLING RESISTANCE	0,075	95,0%	TÜV-MARK INDEX	100,0%	131,4%	114,3%	101,0%
HIGH SPEED DURABILITY	0,125	104,1%	TÜV-MARK INDEX	100,0%	117,5%	117,5%	117,5%
<b>TOTAL RESULT (weighted)</b>	<b>∑ 1,000</b>	<b>101,5%</b>	<b>100,0%</b>	<b>TÜV-MARK TEST</b> <b>passed</b> Garching, 05.05.2015 TÜV SÜD Product Service GmbH Daimlerstraße 11 85748 Garching Tel. 089/32950-178 · Fax 089/32950-781 [Dipl.Ing. Michael Stamm]			